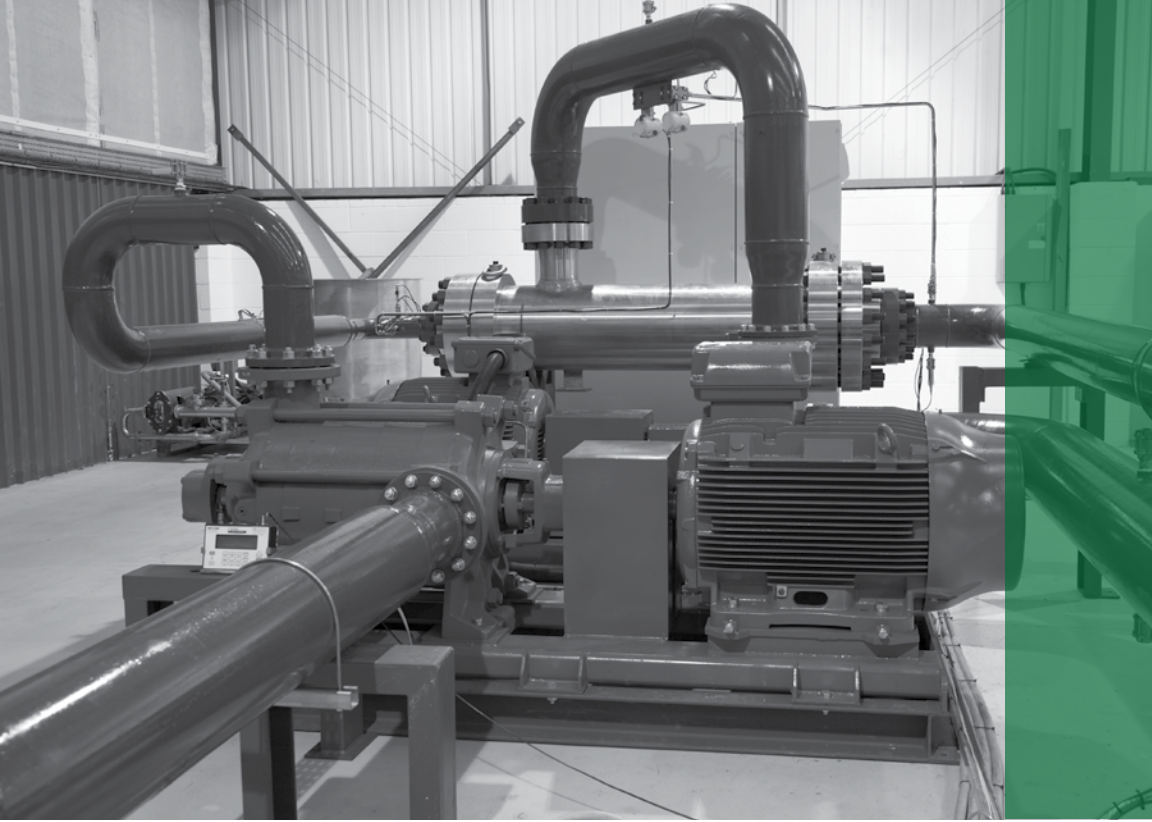


Typical Ejector Solutions



Typical Ejector Solutions

- To revive dead or liquid loaded wells
- Well kick-off
- To increase production from LP wells
- To reduce LP well back-pressure
- To lower pipeline pressure in the manifold
- To draw-down pressure on manifolds/clusters/platforms/fields
- To minimise LP wells backing out under the effect of HP wells
- To test wells at lower pressures than the production manifold pressure
- To further boost production gain from ESP produced wells
- To replace multiple VSDs on ESP installations to provide "soft-start" equivalent and variable production
- To further boost production gain from gas lifted wells
- To prevent wells being loaded with condensate or water
- To stabilise production of LP wells
- Maintain well production during well 'work-overs'
- To boost production from the LP string in dual completion wells
- Boost production of multi-phase wells with and without separation
- Simultaneous water and gas injection into wells (SWAG)
- Flare / vent gas recovery (gas recovered for fuel gas or back into process or injected into wells)
- To boost pressure of LP gas or liquids
- To de-bottleneck existing compressors
- To boost compressor capacity by altering compressor compression ratios/increase compressor throughput
- To replace an intermediate stage of compression in the compressor train
- To increase gas compressor suction pressure for deeper gas injection depth
- Single/multi-phase flow boosting
- To unload liquids from gas export pipelines
- To commingle two streams of different pressures efficiently



Potential sources of HP power to drive an Ejector

- Energy otherwise wasted across choked HP wells
- HP well liquid including multi-phase wells
- Produced water
- Injection water
- Downhole ESP liquid
- Lift gas
- Wasted energy from compressor recycle gas
- Wasted energy across anti-surge valve in compressor installations
- HP export oil or gas
- Pumped liquid

For further information please visit www.transvac.co.uk



Transvac Systems Ltd., Monsal House, 1 Bramble Way, Alfreton, Derbyshire, DE55 4RH, UK
Tel: +44 (0) 1773 831100 | **Email:** sales@transvac.co.uk | **Web:** www.transvac.co.uk

Registered in England No. 1526398

